



COMPRESSOR  
EQUIPMENT  
MANUFACTURER







# COMPANY TODAY

Modern engineering and manufacturing company,  
founded in 2010

Area of the production facility

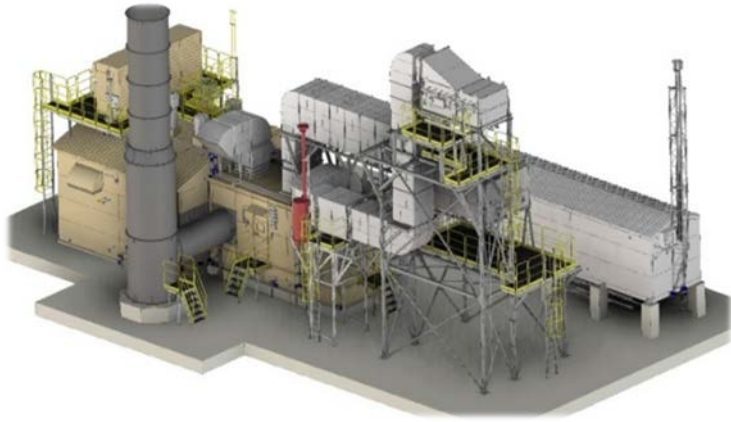
# 150 000 m<sup>2</sup>

more than **500**  
employees

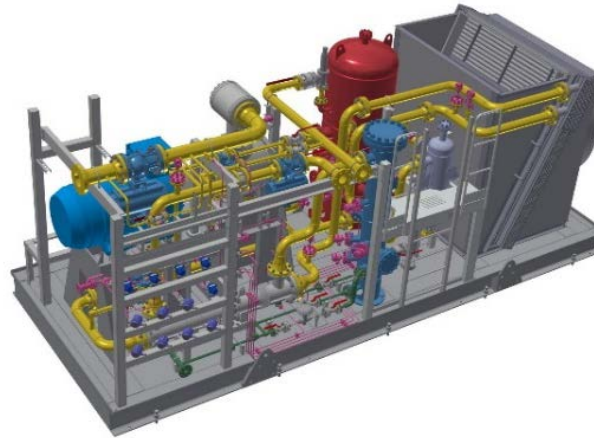
- Custom design and engineering based on end-user requirements
- Solutions for Up-stream, Mid-stream and Down-stream applications
- Completed and fully-tested equipment from own facility
- After-Sales support



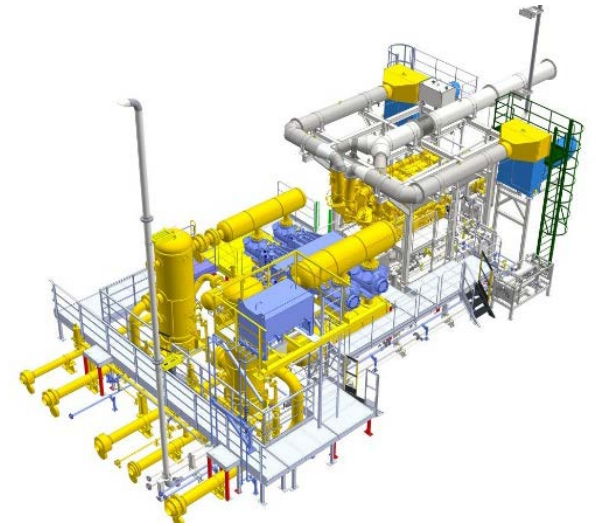
# PRODUCT LINE



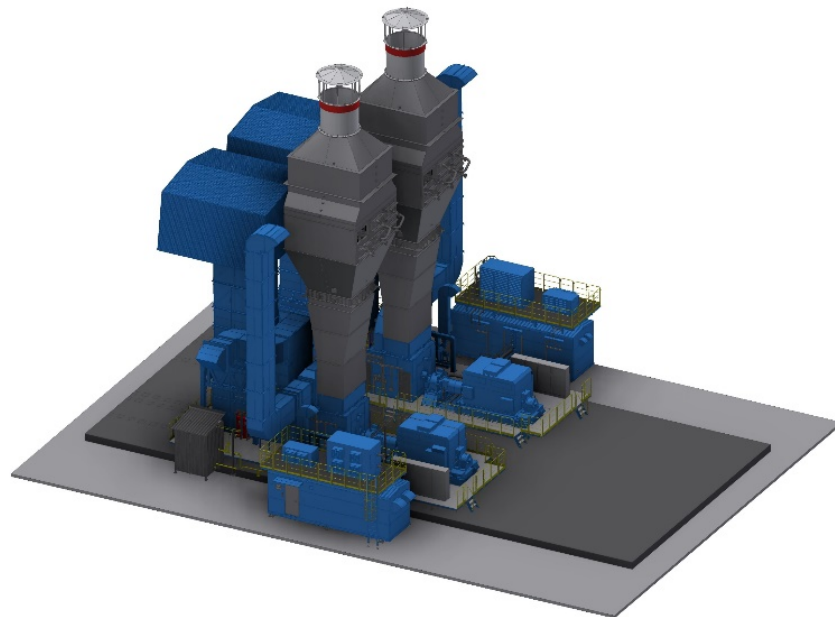
CENTRIFUGAL GAS COMPRESSOR UNITS



SCREW COMPRESSOR UNIT



RECIPROCATING COMPRESSOR UNITS



GAS TURBINE POWER UNITS



MOBILE COMPRESSOR UNITS (MCU)  
BASED ON THE COMMON MOTOR-DRIVEN  
COMPRESSOR

# IRTYSH CENTRIFUGAL GAS COMPRESSOR UNITS

- Power range from 4 to 32 MW
- Modular design or easy-to-assemble hangar type
- High prefabrication level
- Different climatic categories
- New projects and modernization of existing compressor stations
- Drive: gas or steam turbine, electric motor
- Compliance with API 617 standard

**Gas turbines:** Bakers Hughes, Siemens, Solar Turbines, United Engine Corporation and others

**Compressors:** Nuovo Pignone, Siemens, Solar Turbines and others

Manufactured

**71 units**





# GAS TURBINE POWER UNITS

- Power range from 4 to 32 MW
- Stationary and mobile application
- High prefabrication level
- Block-modular design
- Gas turbine power units can be supplied in the common hangar
- Power generation for any applications

**Gas turbines:** Bakers Hughes, Siemens, Solar Turbines, United Engine Corporation and others

Manufactured  
**6 units**





# RECIPROCATING COMPRESSOR UNITS

- Power range from 30 kW to 16 MW
- Design: modular, on-skid
- High prefabrication degree, easy for installation and commissioning
- Operation in wide pressure at high efficiency values
- Up-stream and down-stream application
- Arctic, tropic and off -shore application
- Drive: gas engine, electric motor, steam turbine
- Compliance with API 618 standard

**Compressors:** Ariel, Dresser-Rand, Nuovo Pignone, Cooper, Burckhardt and others

Manufactured

# 60 units





# SCREW COMPRESSOR UNITS

- Up to 3 MW
- Design: modular, on-skid
- High prefabrication degree; packaged modular supply
- Easy installation and commissioning
- Capacity control from 10% to 100%
- Drive: electric motor, gas engine
- Compliance with API 618 standard

**Compressors:** Howden, Kobelco, GEA Grasso and others

Manufactured

**16 units**





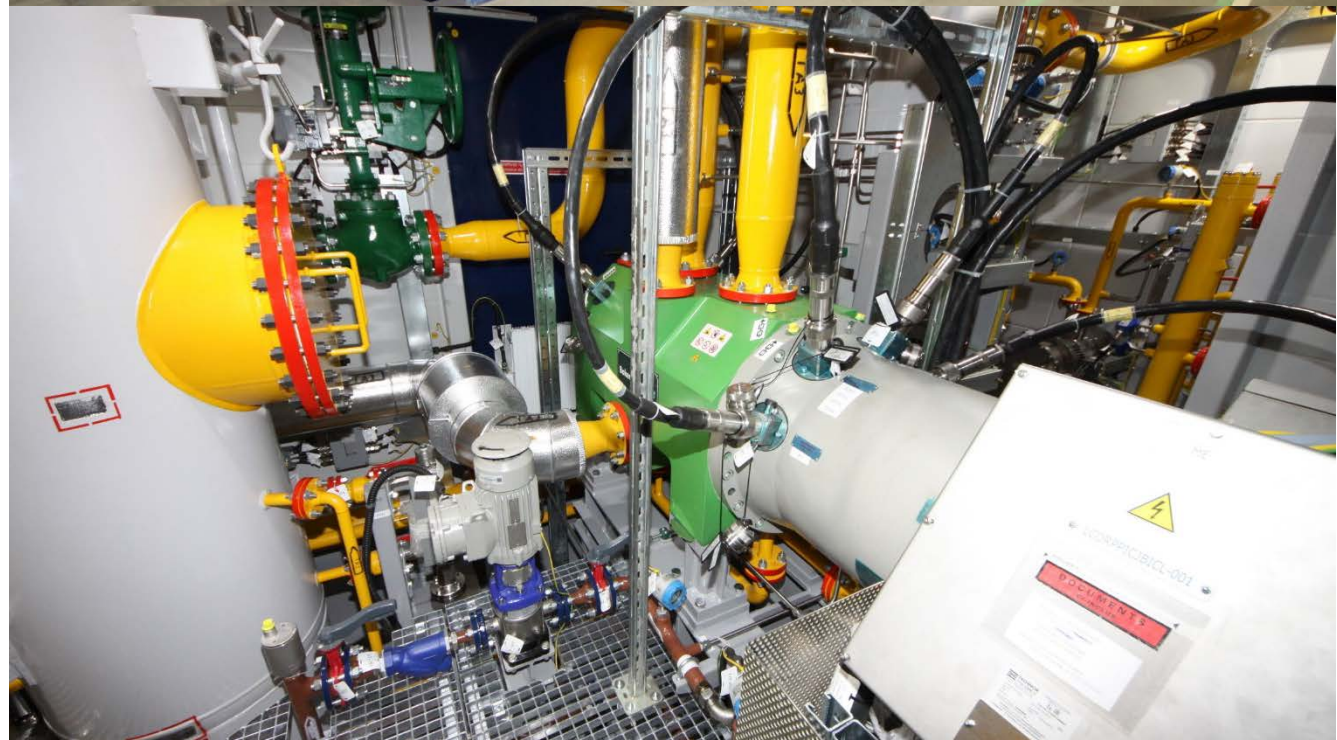
# MOBILE COMPRESSOR UNITS BASED ON THE COMMON MOTOR-DRIVEN COMPRESSOR

Mobile Compressor Unit (MCU) is a modern and economical alternative for compression of low pressure gases

MCU in block design of various capacities for compression of low-pressure gases for fields with falling production, with the use of sparsely populated maintenance technologies

## Main advantages:

- Single skid-mounted design including air cooling unit; ready-to-operate
- Minimum site preparation for MCU installation on site
- No increase gear, lubrication system, seal gas system; no gas release and leakage
- Optimal power consumption in each mode due to VFD; prompt cold startup
- Maximum possible intervals between maintenance and repair
- Use of minimally manned MCU operational technologies





# CAPACITIVE AND SEPARATION EQUIPMENT

Pressure is up to 35 MPa. Volume is up to 100 m<sup>3</sup>

## Options:

- Filling
- High pressure
- Separators
- With external anti-corrosion coating
- With internal baffles
- With mixing devices
- With inner coating (epoxies, gumming)
- Other

## Materials:

- Carbon steel
- Stainless steel
- Special steels and alloys

The vessels are designed and manufactured in accordance with the requirements of ASME, GOST, federal rules and industrial safety regulations



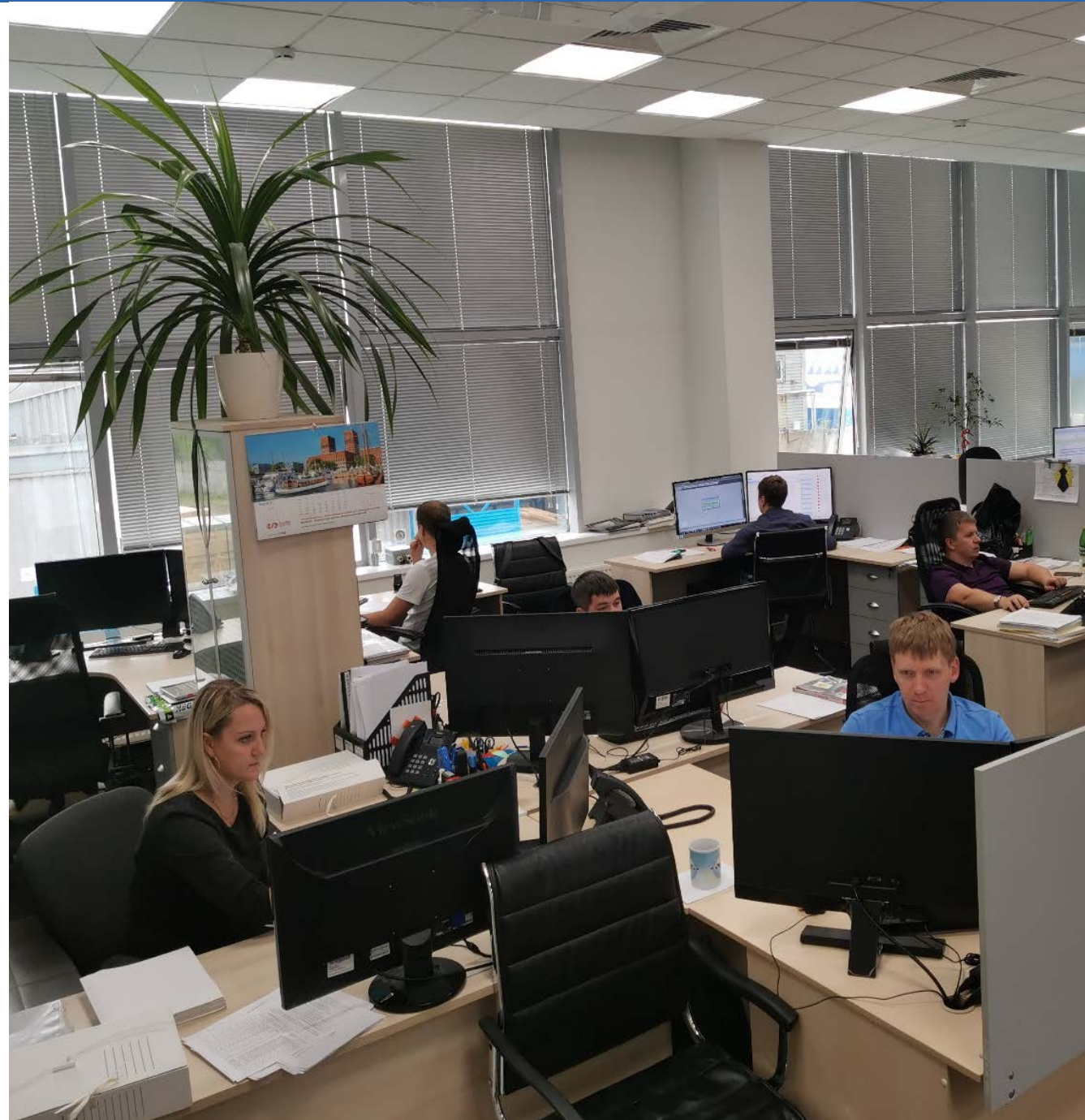


# DESIGN DEPARTMENT

- Development of technical assignment, sets of reference, design, operating and repair documentation
- Design of the associated process equipment and auxiliary systems
- Strength, gas-dynamic, hydraulic, thermal, acoustic calculations
- 3D-modelling

## **Own Design team - more than 120 persons**

- Design of automation and power supply systems, lighting, power equipment and instrumentation equipment
- Application of modern and innovative technical solutions, technologies and materials in the course of work on the project
- Development of engineering documentation in accordance with API, ISO, ASTM and ASME standards
- Designer supervision at all stages of the project implementation at its own facilities and at the ones of the equipment subvenders





# MANUFACTURING

## Novo-Gayvinskaya Plant

- Total area is 65 000 m<sup>2</sup>
- Assembly and welding workshop is 5 000 m<sup>2</sup>
- Painting workshop is 1 500 m<sup>2</sup>
- Offices are 2 500 m<sup>2</sup>

12

Compressor units  
simultaneously

20

Full packages annually





# MANUFACTURING

## Brodovsky Plant

- Total area is 84 000 м<sup>2</sup>
- Assembly workshop 14 900м<sup>2</sup>
- Offices are 2 000 м<sup>2</sup>
- Load capacity of cranes is from 10 to 80 tones
- Gates of 10 x 10 m
- Test bench for compressor units

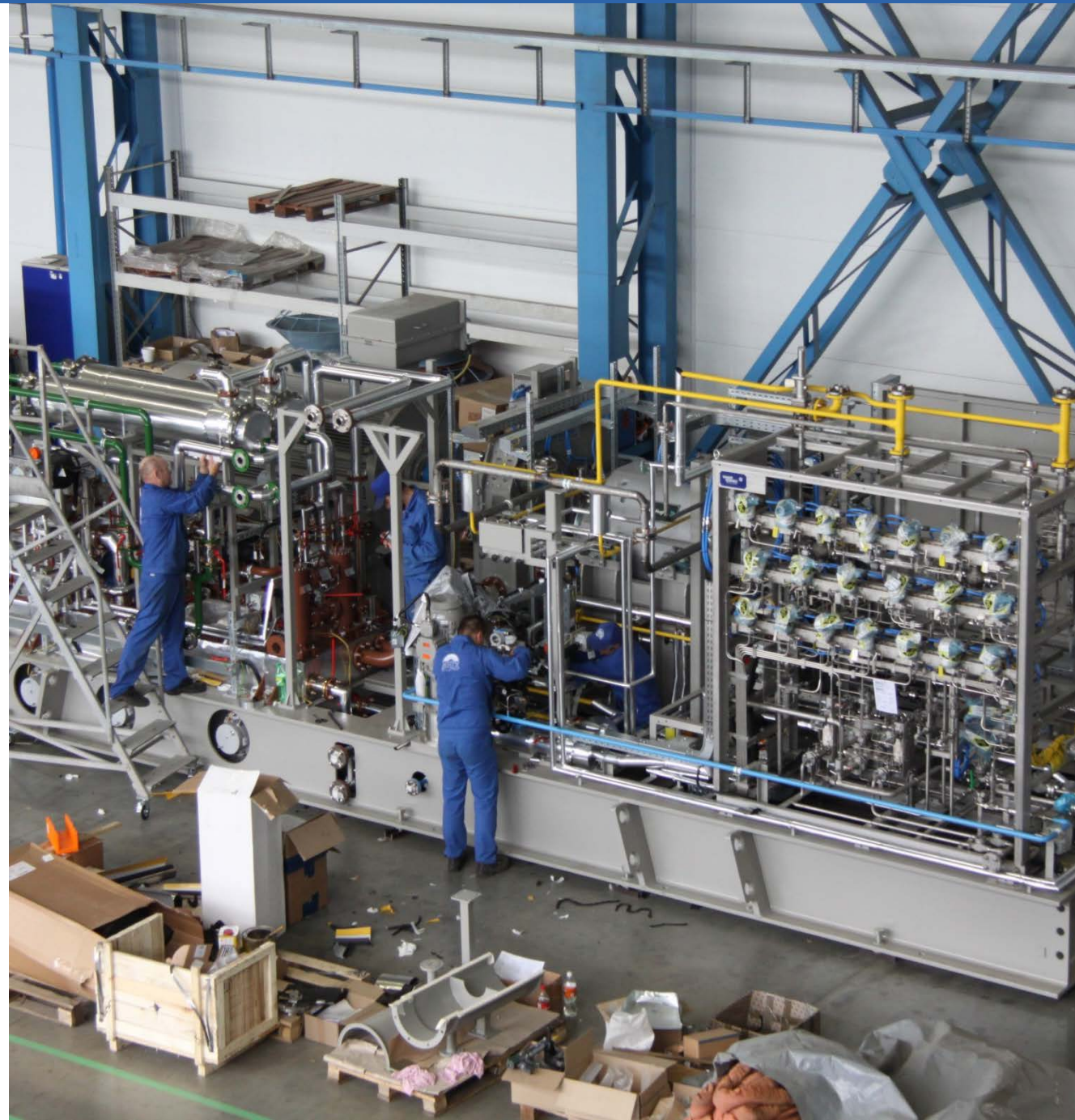
More  
**40** | Full completely units





# PRODUCTION CAPABILITIES

1. **Blank preparation section:** metal cutting and plasma cutting, lathe, milling and drilling operations
2. **Welding and assembly section:** welding, mocking-up, assembly of steel structures and process equipment
3. **Machine assembly section:** packaging of the systems, installation of the process equipment and argon arc welding
4. **Electrical section:** assembly of the switchboard equipment and performance of electrical work package
5. **Section of the vessel equipment automatic submerged-arc welding**
6. **Painting shop with sand blasting**
7. **Packing section**
8. **Finished products storage area:** Storage and shipment area





# TECHNICAL SUPPORT AND SERVICE

- Erection supervision work
- Commissioning and start-up
- Maintenance service
- Delivery of spare parts
- Equipment modernization
- Specialists of the company have valid certificates and accreditation for performing work
- Experience in performing erection supervision and commissioning works on the following equipment: Caterpillar, Cooper, Ariel, Howden, Nuovo Pignone, John Crane, Eagle Burgmann, Thermodyn, GE, Baker Hughes, Solar Turbines, etc
- Delivery of spare parts and consumables, service, warranty and post-warranty maintenance





# QUALITY SYSTEM

INGC products have all necessary certificates of conformity and other authorization documentation

Certificates of compliance with the requirements of international standards:

- ISO 9001:2015
- ISO 14001:2015
- OHSAS 18001:2007
- ASME
- INTERGAZCERT
- TR TS
- Others





**PROJECTS**



# YUZHNO-RUSSKOYE OIL AND GAS FIELD

**Centrifugal gas compressor units** for operation of the booster compressor workshop, in terms of extension for Yuzhno-Russkoye oil and gas field

**Drive:** Gas turbine GTU-16PA  
(UEC-Aviadvigatel JSC)

**Compressor:** Centrifugal NC-16 DCS-02  
«Ural» (Iskra PJSC)

**Capacity:** 16 MW

**Discharge pressure:** 7,4 MPa (g)

**Production rate:** 25,1 billion normal m<sup>3</sup>/year

Severneftegazprom LLC (2012-2020)  
(Gazprom)

**Number of units:**

**14** centrifugal gas compressor units

**Works on site:**

Installation and commissioning of GCU with a drive, compressor and hangar, replacement of the compressor bundles





# AKYRTOBE BOOSTER COMPRESSOR STATION (KAZAKHSTAN)

**Centrifugal gas compressor units** in individual shelters for boosting compressor station «Akyrtobe»

**Drive:** NK-16-18STD (KMPO JSC, Kazan)

**Compressor:** BCL356/A (Thermodyn GE Oil & Gas)

**Capacity:** 18 MW

**Discharge pressure:** 9,8 MPa (abs)

**Production rate:** 1,986 billion normal m<sup>3</sup>/year

KazTransGaz LLC (2016-2018)

**Number of units:**

**3** centrifugal gas compressor units «Irtys»

**Works on site:**

Installation and commissioning of GCU with a drive, compressor and hangar, replacement of the compressor bundles





# URENGOY GAS TREATMENT PLANT

**Centrifugal gas compressor units** in the common shelter

**Drive:** PS-90GP and D-30EU-6  
(UEC-Aviadvigatel JSC)

**Compressors:** STC-SV (Siemens)

**Capacity:** 10 and 6 MW

**Discharge pressure:** 7,3/7,3 MPa

**Production rate:** 170276 and 76494 m<sup>3</sup>/h

Gazprom Pererabotka LLC (2017-2018)  
(Gazprom)

**Number of units:**

2 centrifugal gas compressor units «Irtysh» - 10MW

1 centrifugal gas compressor units «Irtysh» - 6MW

**Works on site:**

Erections supervision, installation and commissioning of GCU with a drive, compressor and hangar shelter





# SAMANTEPE COMPRESSOR STATION (UZBEKISTAN)

## Centrifugal gas compressor units

Further development of Semantepe field.  
Yuzhny Urtobulok

**Drive:** Taurus 70 (Solar Turbines)

**Compressor:** 2BCL 406 (Thermodyn, BHGE)

**Capacity:** 7,8 MW

**Discharge pressure:** 5,5 MPa

**Production rate:** 10 mln normal m<sup>3</sup>/d

Enter Engineering Pte Ltd (2019)  
(Uzbekneftegaz)

## Number of units:

2 centrifugal gas compressor units «Irtys»

## Works on site:

Erections supervision and commissioning  
of GCU with a drive





# ALAN / ZEVARDY (UZBEKISTAN)

**Centrifugal gas compressor units** in the block-module design

**Drive:** AI-336-2-8 (Motor Sich JSC)

**Compressor:** PCL504 (Baker Hughes)

**Capacity:** 8 MW

**Discharge pressure:** 1,7 – 0,9 MPa

**Production rate:**

9,55 – 3,09 mln m<sup>3</sup>/d Zevardy

9,14 – 2,09 mln m<sup>3</sup>/d Alan

Enter Engineering Pte Ltd (2019)  
(Uzbekneftegaz)

**Number of units:**

2 units «Irtys» Alan

2 units «Irtys» Zevardy

**Works on site:**

Erections supervision and commissioning  
of GCU with a drive





# DENGIZKUL COMPRESSOR STATION (UZBEKISTAN)

**Centrifugal gas compressor units** in the block-module design

**Drive:** GTU-16 Nova 16LT (Baker Hughes)

**Compressor:** 2BCL608 (Baker Hughes)

**Capacity:** 16 MW

**Discharge pressure:** 1,83 - 0,5 MPa

**Production rate:** 1,52-5,17 mln m<sup>3</sup>/d

Enter Engineering Pte Ltd (2012)  
(Uzbekneftegaz)

**Number of units:**

2 centrifugal gas compressor units «Irtysh»

**Works on site:**

Erections supervision and commissioning of  
GCU with a drive





# POVKHOVSKOYE FIELD

**Electrically driven gas compressor units**  
in the block-module design

**Drive:** ET900V2 Nidec ASI SpA-Motors,  
Generators&Drives, Monfalcone

**Compressor:** 2BCL457  
( Nuovo Pignone, Baker Hughes)

**Capacity:** 4 MW

**Discharge pressure:** 3,02 MPa (g)

**Production rate:** 20001 normal m3/h

Lukoil (2021)

**Number of units:**

**3** electrically driven gas compressor units  
«Irtysk»

**Works on site:**

Installation supervision, commissioning,  
commissioning of the facility





# VOLGOGRAD

**Electrically driven gas compressor unit**  
in frame

**Drive:** 1NB1 564-4AA60-4AGO (Siemens)

**Compressor:** BCL304 (Thermodyn, BHGE)

**Capacity:** 1,7 MW

**Discharge pressure:** 2,1 MPa (g)

**Production rate:** 20560 normal m<sup>3</sup>/h

Lukoil PJSC (2021)

**Number of units:**

1 electrically driven gas compressor unit  
«Irtys»

**Works on site:**

Installation supervision and commissioning





# NOYABRSKNEFTEGAS

**Packaged modular compressor unit**  
based on the integrated centrifugal ICL  
motor-compressor

**Motor-Compressor:** ICL (Thermodyn, BHGE)  
**Capacity:** 0,33 MW  
**Discharge pressure:** 0,81 MPa (g)  
**Production rate:** 1903 normal m3/h

Gazprom Neft PJSC (2021)

**Number of units:**  
**1** packaged modular compressor unit  
The first in Russia

**Works on site:**  
Installation supervision and commissioning





# ICHEDINSKOYE FIELD

Complete gas turbine power units of block-modular design

**Drive:** Taurus 60-7901 (Solar Turbines)

**Generator unit:** Taurus 60 (Solar Turbines)

**Capacity:** 5,74 MW

**Rated voltage:** 6,3 kV

Irkutsk Oil Company LLC (2018)

**Number of units:**

2 gas turbine power units «Irtys»

**Works on site:**

Erection supervision and commissioning of gas turbine power units





# BOVANENKOVSKOE GAS FIELD

Complete gas turbine power units of blockmodular design

**Drive:** GTU-12PG-2 (UEC-Perm Engines JSC)

**Generator unit:** TC-12-2PYXЛЗ  
(Elektrotiyazhmash-Privod LLC)

**Capacity:** 12 MW

Gazprom dobycha Nadym LLC (2022)

**Number of units:**

2 gas turbine power units «Irtys»

**Works on site:**

Erection supervision and commissioning of gas turbine power units





# YURUBCHENO-TOKHOMSKOYE FIELD

**Reciprocating CUs** in the individual shelters for oil-associated gas compression and further injection into formation

**Drive:** G3616 LE (Caterpillar)

**Compressor:** KBU/6 (Ariel Corp.)

**Capacity:** 3,7 MW

**Discharge pressure:** 28,0 MPa (g)

**Production rate:** 23000 normal m<sup>3</sup>/h

Vostsibneftegaz JSC (2016)  
(NK Rosneft)

**Number of units:**

**12** reciprocating compressor units

**Works on site:**

Erection supervision of the helter, CU units, air-cooling unit of gas and engines, exhaust system, low-voltage package module and ACS.  
Regular reconversion





# CHINAREVSKOYE FIELD (KAZAKHSTAN)

**Reciprocating CUs** of modular construction, ready-to-operate. Reinforcement block and aircooling units of gas with piping are installed outside

**Drive:** 1SG64544JJ80-Z (Siemens)

**Compressor:** JGJ/6 (Ariel Corp.)

**Capacity:** 0,96 MW

**Discharge pressure:** 4,2 MPa (g)

**Production rate:** 12000 normal m3/h

Zhaikmunai LLC (2018)

**Number of units:**

3 reciprocating compressor units

**Works on site:**

Erection supervision of CU units, air-cooling units of gas with piping, commissioning and putting into operation





# PYREINOYE BOOSTER COMPRESSOR STATION

**Ready-to-operate in-frame reciprocating compressor unit** located in the hangar enclosure

**Drive:** G3612 (Caterpillar)

**Compressor:** KBZ/4 (Ariel Corp.)

**Capacity:** 2,64 MW

**Discharge pressure:** 11,20 MPa (g)

**Production rate:** 260 420 normal m<sup>3</sup>/hr

Sibneftegaz LLC (2018)  
(NK Rosneft)

**Number of units:**

1 reciprocating compressor unit

**Works on site:**

Erection supervision of the compressor units,  
gas air cooler with piping, adjustment  
and start-up





# CAMEROON REPUBLIC

The first compressor unit for INGC manufactured to meet all the requirements of the Maritime Register for the operation of equipment on the sea shelf

**Ready-to-operate on-frame reciprocating compressor units**

**Drive:** CT 500 Y6 (Nidec)

**Compressor:** CFH64 (COOPER)

**Capacity:** 1,4 MW

**Discharge pressure:** 8,5 MPa (g)

**Production rate:** 9 417 normal m3/hr

Perenco Rep S.A.R.L. (2021)  
(France)

**Number of units:**

2 reciprocating compressor units

**Works on site:**

Installation supervision, commissioning,  
commissioning of the facility





# EVO-YAHINSKOYE FIELD

**Reciprocating CUs** of modular construction,  
ready-to-operate

**Drive:** BAO-560-905-4DY2 (Siemens)

**Compressor:** JGJ/6 (Ariel Corp.)

**Capacity:** 1 MW

**Discharge pressure:** 2,8 MPa (g)

**Production rate:** 36000 normal m3/h

Novatek-Yurkharovneftegaz LLC (2022)

**Number of units:**

2 reciprocating compressor units

**Works on site:**

Erection supervision of CU units,  
commissioning and putting into operation





# POVKHOVSKOYE FIELD

**Screw CU** in block design, full ready-to-operate

**Drive:** 1BAO-450SA-2Y2.5 (ELDIN)

**Compressor:** VP-V36S-28 (GEA Grasso)

**Capacity:** 0,132 MW

**Discharge pressure:** 0,32 MPa (g)

**Production rate:** 1500 normal m3/hr

Lukoil-Zapadnaya Siberia LLC (2019)  
(Lukoil)

**Number of units:**

1 screw compressor unit

**Works on site:**

Erection supervision of CU units,  
commissioning and putting into operation





# CONGO REPUBLIC

**Packaged screw CU** on the frame. Outdoor design. Air-cooling unit of gas with piping is Installed outside on the frame integral with the unit

**Drive:** M3GP (ABB)

**Compressor:** WRVi 255-110 38 (HOWDEN)

**Capacity:** 0,45 MW

**Discharge pressure:** 1,69...1,80 MPa (g)

**Production rate:** 4228 normal m3/hr

Perenco Rep S.A.R.L. (2019)  
(France)

**Number of units:**

**1** screw compressor unit





# AMURSKY GAS CONDENSATE FIELD

**Packaged screw CU** on the frame. Outdoor design

**Drive:** M3KP 355SMB 2 IMB3 (ABB)

**Compressor:** KS25LX (Kobelco)

**Capacity:** 0,32 MW

**Discharge pressure:** 1,04 MPa (g)

**Production rate:** 3 398 normal m3/hr

Linde GmbH (2022)  
(SIBUR Holding)

**Number of units:**

**1** screw compressor unit





# VOSTOCHNO-KAPITONOVSKOE FIELD

**Screw CU** low and medium pressure on the frame

## SCU-005/1

**Drive:** ASA 280M-2 (UMEB)

**Compressor:** WRV 204-110 50 (HOWDEN)

**Capacity:** 0,09 MW

**Discharge pressure:** 0,7 MPa (g)

**Production rate:** 551,25 normal m3/hr

## SCU-005/2

**Drive:** VGF H24SE (Waukesha)

**Compressor:** WRVi 255-110 30 (HOWDEN)

**Capacity:** 0,39 MW

**Discharge pressure:** 2,8 MPa (g)

**Production rate:** 3725 normal m3/hr

Orenburgneft JSC (2022)

**Number of units:**

5 screw compressor units





# COMPONENTS, ASSEMBLIES AND STRUCTURES FOR COMPRESSOR UNITS



**Gas Turbine Enclosure**  
**Lokosovsky gas field**  
**UEC-Aviadvigatel**



**Air intake system**  
**Udarnaya electric station**  
**UEC-Aviadvigatel**



**Gas Turbine Enclosure ventilation system**  
**Salmanovskoe (Utrenee)**  
**oil and gas condensate field**  
**NOVATEK**



**Gas Turbine Enclosure ventilation**  
**system Yuzhno-Sakhalinskaya TPS-1**  
**UEC-Aviadvigatel**



**Gas separators**  
**Novo-Urengoy license area**  
**ROSPAN INTERNATIONAL**



**Exhaust system**  
**Chayandinskoye gas field**  
**Gazpromneft-Zapolyarye**



# MAINTENANCE, OVERHAUL







## **HEADQUARTER**

Nauchniy proezd, 14a, bld.3  
Moscow, Russia, 117246  
Tel.: +7 495 231 46 73 / 61  
[info@ingc.ru](mailto:info@ingc.ru)

[ingc.ru/en](http://ingc.ru/en)